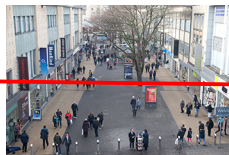


M Butteriss 517085. PH4-EYV2



_MG_4029.jpg



_MG_4030.jpg



_MG_4031.jpg



_MG_4032.jpg



_MG_4033.jpg



_MG_4034.jpg



_MG_4035.jpg



_MG_4036.jpg

All a cop out! Not close enough!



_MG_4037.jpg



_MG_4038.jpg

Interesting shape but angle completely wrong, not close enough



_MG_4039.jpg



_MG_4040.jpg

As before!



_MG_4041.jpg



_MG_4047.jpg



_MG_4048.jpg



_MG_4049.jpg



_MG_4050.jpg



_MG_4051.jpg



_MG_4052.jpg



_MG_4053.jpg

Too Blurred
Too busy
Getting closer though!



_MG_4054.jpg



_MG_4055.jpg



_MG_4056.jpg



_MG_4057.jpg

M Butteriss 517085. PH4-EYV2



_MG_4058.jpg



_MG_4059.jpg



_MG_4060.jpg

Better but still not close enough



_MG_4061.jpg



_MG_4062.jpg



_MG_4063.jpg

Good depth due to diagonals



_MG_4064.jpg



_MG_4066.jpg



_MG_4067.jpg



_MG_4068.jpg

Still not personal. Getting braver



_MG_4069.jpg



_MG_4070.jpg

M Butteriss 517085. PH4-EYV2



~~_MG_4071.jpg~~



~~_MG_4072.jpg~~



~~_MG_4073.jpg~~



~~_MG_4074.jpg~~



~~_MG_4075.jpg~~



~~_MG_4076.jpg~~



~~_MG_4077.jpg~~



~~_MG_4078.jpg~~



~~_MG_4079.jpg~~



~~_MG_4080.jpg~~



~~_MG_4081.jpg~~



~~_MG_4082.jpg~~

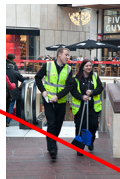
M Butteriss 517085. PH4-EYV2



_MG_4083.jpg



MG_4084.jpg



_MG_4085.jpg



_MG_4086.jpg



_MG_4087.jpg



_MG_4088.jpg



_MG_4089.jpg



_MG_4090.jpg



_MG_4091.jpg



_MG_4092.jpg



_MG_4093.jpg



_MG_4094.jpg

Good abstraction

Assignment 2 contact sheets

M Butteriss 517085. PH4-EYV2



_MG_4095.jpg



_MG_4096.jpg



_MG_4097.jpg



_MG_4098.jpg



_MG_4099.jpg



_MG_4100.jpg



_MG_4101.jpg



_MG_4102.jpg



_MG_4103.jpg



_MG_4104.jpg



_MG_4105.jpg



Good!
No people!

_MG_4106.jpg

M Butteriss 517085. PH4-EYV2



_MG_4107.jpg



_MG_4108.jpg



_MG_4109.jpg



_MG_4110.jpg



_MG_4111.jpg



Getting there

_MG_4112.jpg



_MG_4113.jpg



_MG_4114.jpg



_MG_4115.jpg

Shame



_MG_4116.jpg

Great

Dychotomy



_MG_4117.jpg

YES!!!



_MG_4118.jpg

Assignment 2 contact sheets

Blurred

M Butteriss 517085. PH4-EYV2



_MG_4119.jpg

Looking away



_MG_4120.jpg



_MG_4121.jpg



_MG_4122.jpg



_MG_4123.jpg

No eyes



_MG_4124.jpg

OK



_MG_4125.jpg



_MG_4126.jpg

Possible



_MG_4127.jpg

Possible



_MG_4128.jpg

Blurred



_MG_4129.jpg

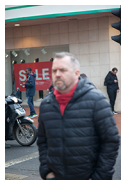
Blurred



_MG_4130.jpg

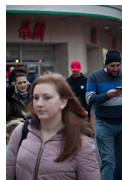
M Butteriss 517085. PH4-EYV2

Blur



_MG_4131.jpg

Blur



_MG_4132.jpg

Too tight



_MG_4133.jpg



_MG_4134.jpg



_MG_4135.jpg



_MG_4136.jpg

Dichotomy/humour



_MG_4137.jpg



_MG_4138.jpg

Eye contact & tension



_MG_4139.jpg



_MG_4140.jpg



_MG_4141.jpg

Good movement and Composition



_MG_4142.jpg

M Butteriss 517085. PH4-EYV2



_MG_4143.jpg



_MG_4144.jpg



_MG_4145.jpg



_MG_4146.jpg



_MG_4147.jpg



_MG_4148.jpg



_MG_4149.jpg



_MG_4150.jpg



_MG_4151.jpg



_MG_4152.jpg



_MG_4153.jpg



_MG_4154.jpg

Looks half asleep, no charisma/pizazz!



_MG_4155.jpg



_MG_4156.jpg



_MG_4157.jpg



_MG_4158.jpg



_MG_4159.jpg



_MG_4160.jpg



_MG_4161.jpg



_MG_4162.jpg

Brilliant
Dychotomy/humour

Yes, yes, yes

Good light on face
shallow
DoF

Blur

No faces

No faces

No faces



_MG_4163.jpg



_MG_4164.jpg



_MG_4165.jpg



_MG_4166.jpg

M Butteriss 517085. PH4-EYV2



_MG_4167.jpg



_MG_4168.jpg



_MG_4169.jpg



_MG_4170.jpg



_MG_4171.jpg

Could make a person/phone collection



MG_4172.jpg



_MG_4173.jpg



_MG_4174.jpg



_MG_4175.jpg



_MG_4176.jpg



_MG_4177.jpg



_MG_4178.jpg

This and next one work very well

Really good, but centre needed to be special.

Assignment 2 contact sheets

M Butteriss 517085. PH4-EYV2



May use
or one
before

_MG_4179.jpg



_MG_4180.jpg



_MG_4181.jpg



_MG_4182.jpg



poor
composition

_MG_4183.jpg



YES!
Has
eye
contact
and
tension

_MG_4184.jpg



_MG_4185.jpg



_MG_4186.jpg



_MG_4187.jpg



_MG_4188.jpg



YES!
Has
something!?

_MG_4189.jpg



_MG_4190.jpg

M Butteriss 517085. PH4-EYV2



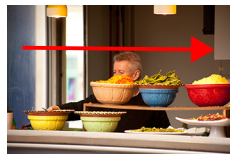
_MG_4191.jpg



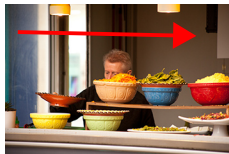
_MG_4192.jpg



_MG_4193.jpg



_MG_4194.jpg



_MG_4195.jpg



_MG_4196.jpg



_MG_4197.jpg



_MG_4198.jpg



_MG_4199.jpg

All too busy



_MG_4200.jpg



_MG_4201.jpg



_MG_4202.jpg

All good colours, but face obscured

Good quality with shallow DoF to isolate person but lacks something



_MG_4203.jpg



_MG_4204.jpg



_MG_4205.jpg

Yes. Smoking adds an edgy feel



_MG_4206.jpg

Most natural/relaxed of the 4



_MG_4207.jpg



_MG_4208.jpg



_MG_4209.jpg



_MG_4210.jpg

OK but static



_MG_4211.jpg



_MG_4212.jpg

Possible



_MG_4213.jpg



_MG_4214.jpg

Blurred

OK but bland

As before



_MG_4215.jpg



_MG_4216.jpg



_MG_4217.jpg



_MG_4218.jpg



_MG_4219.jpg



_MG_4220.jpg



_MG_4221.jpg



_MG_4222.jpg



_MG_4223.jpg



_MG_4224.jpg

Poor



_MG_4225.jpg

Lighter to match



_MG_4225a.jpg

Yes

Not obvious



_MG_4226.jpg



_MG_4227.jpg

Blurred and not straight



_MG_4228.jpg

Good composition



_MG_4229.jpg

blurred

Blurred



_MG_4230.jpg

Blurred



_MG_4231.jpg

Blurred



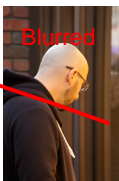
_MG_4232.jpg

Blurred



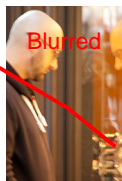
_MG_4233.jpg

Blurred



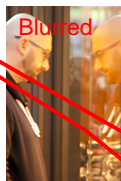
_MG_4234.jpg

Blurred



_MG_4235.jpg

Blurred



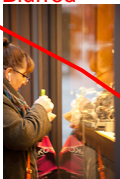
_MG_4236.jpg

Blurred



_MG_4237.jpg

Blurred



_MG_4238.jpg